

Key Giancoli Problems # 4, 6, 8, Questions # 5, 13, 19

Problems

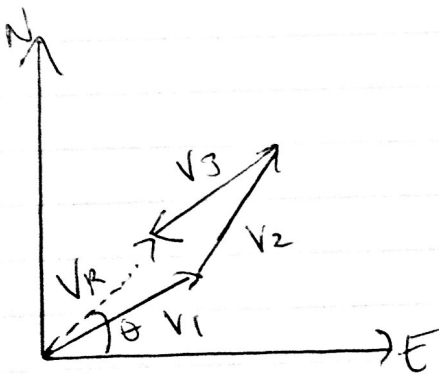
(1) Both measure scalar

(6) Maximum: 7.5 m, minimum - 0.5 m

(8) a) Yes

b) No

Questions (5)



31 m

44° N of E

(13) $\vec{A} - \vec{B} = 80.7$ magnitude

$$R_x = -80.7$$

$$R_y = 2.2$$

$\vec{B} - \vec{A} = 80.7$ magnitude

$$R_x = 80.7$$

$$R_y = -2.2$$

(19) 5.6 m